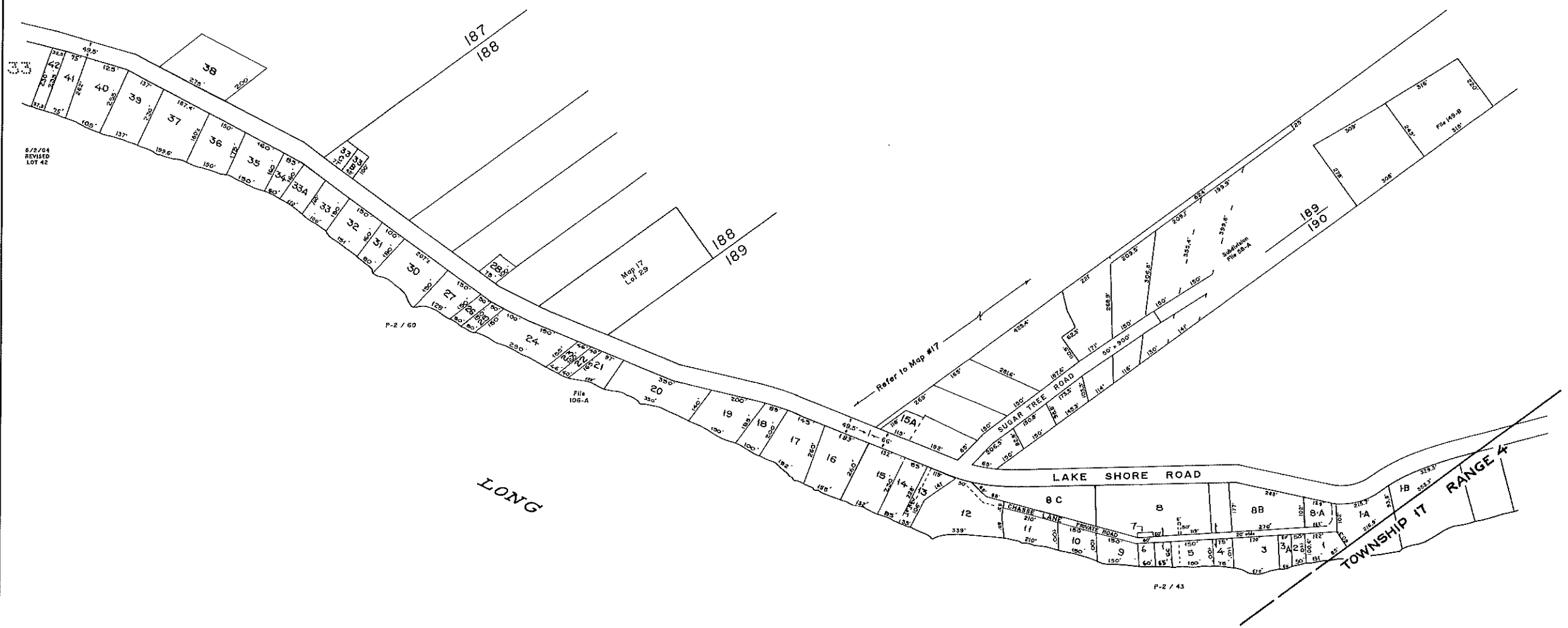


17



6/2/04  
REVISED  
LOT 42

P-2 / 60

File  
106-A

Refer to Map #17

P-2 / 43

6/2/04 REVISED LOT 12  
3/11/94 REVISED LOT 12  
12/21/1993 REVISED LOTS 11 & 12

April 1, 1993  
REVISION  
by  
Matthew M. MacDonald  
BOUNDARY CONSULTANT  
Madawaska, Maine

Up-Dated  
Dec. 31, 2016

**LEGEND**  
PARCEL NUMBERS ..... For Assessment Purposes  
ADJACENT MAPS ..... Not to be used for Conveyances

PROPERTY MAP  
**MADAWASKA, MAINE**  
JAMES W. SEWALL COMPANY OLD TOWN, MAINE  
SCALE 1 INCH = 200 ± FEET